

DAMMON
ENGINEERING, INC.

EMMETT
DAMMON

ARCHITECT
ROBERT
WILTSE

1095 FLORIDA AVENUE
SLIDELL, LA. 70458
985-649-5832

WEBSITE:
WWW.DAMMONENGINEERING.COM
EMAIL:
DAMMONEN@BELLSOUTH.NET

ARCHITECTURE
ENGINEERING
STUDIES
PLANNING
INVESTIGATION
EXPERT WITNESS

CENTURY PARK
UNIVERSITY OF
SOUTHERN
MISSISSIPPI

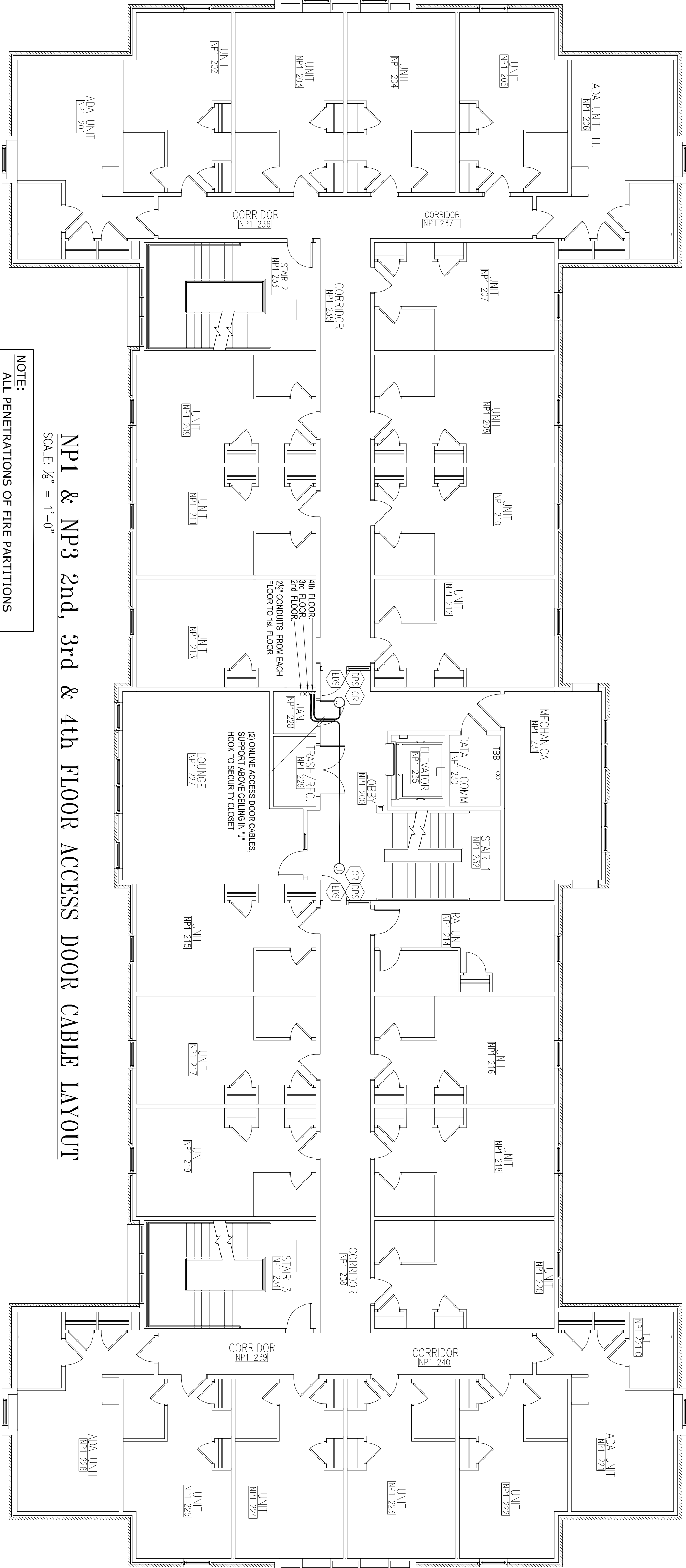
IDN-ACME INC.
1504 JUSTIN RD.
METAIRIE, LA 70001

NP1 & NP3
ACCESS DOOR
CABLE LAYOUT

REV: #1 10/30/09
SCALE: AS NOTED
JOB#: 2028
DATE:6-29-2009
SHEET: 5

SEC 1-1

OF: 8



NP1 & NP3 2nd, 3rd & 4th FLOOR ACCESS DOOR CABLE LAYOUT
SCALE: $\frac{1}{8}'' = 1'-0''$

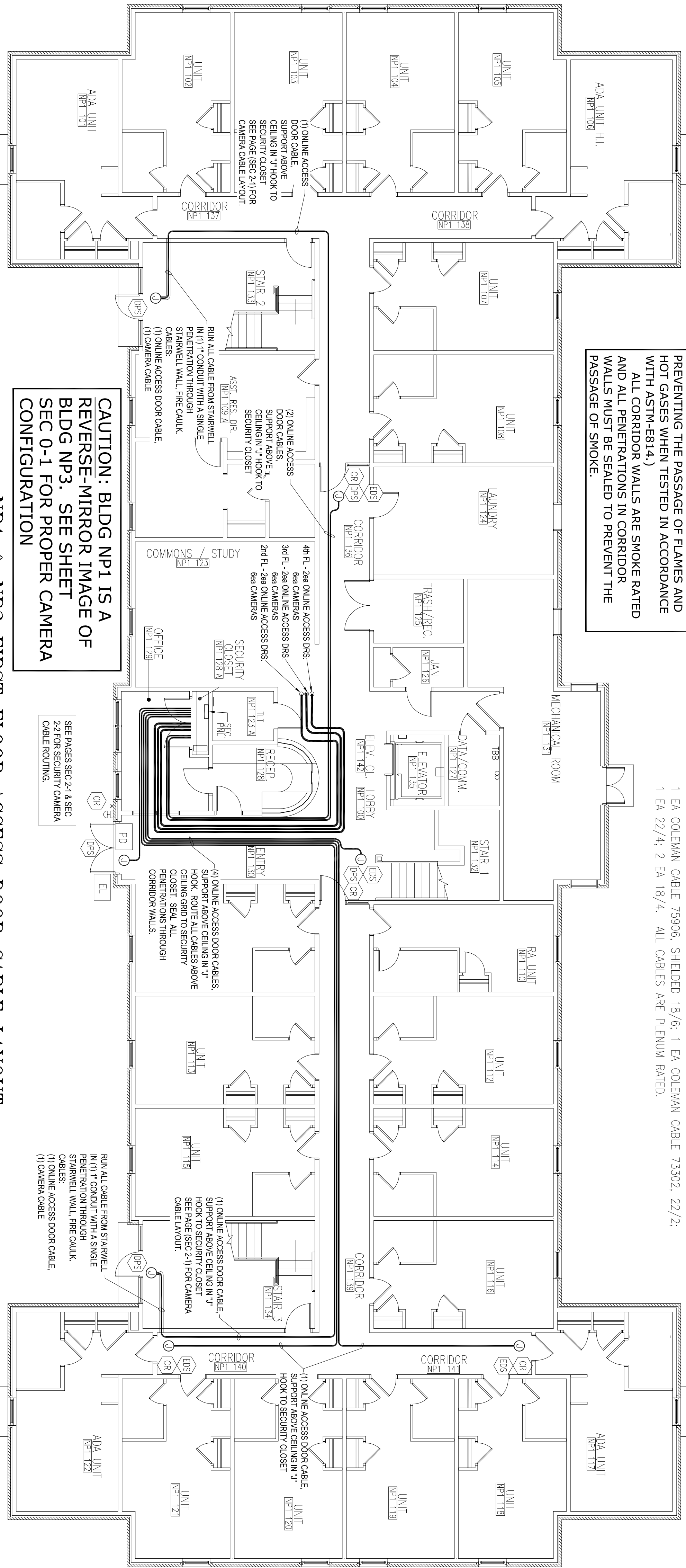
- NOTE: ELECTRICAL CONTRACTOR SHALL COORDINATE SECURITY REQUIREMENTS WITH THE GENERAL CONTRACTOR.
- ACCESS CONTROL SYMBOL LEGEND**
- CR = MAG Stripe Card Reader HD MAG STRIKE LOCKER W/54S
 - PD = PUSH BUTTON (BY OTHERS)
 - PO = POWER DOOR OPERATOR (BY OTHERS)
 - DS = ELECTRIC STRIKE H.E.S. 9800
 - EL = ELECTRIC RELEASE LEVER - 650 RER # ED0520 D13 V1A
 - DS = DOOR POSITION SWITCH - GIR
 - J = JUNCTION BOX

NOTE: ALL PENETRATIONS OF FIRE PARTITIONS SHALL BE FIRE CAULKED. (PENETRATIONS THROUGH RATED CONSTRUCTION SHALL BE SEALED WITH A MATERIAL CAPABLE OF PREVENTING THE PASSAGE OF FLAMES AND HOT GASES WHEN TESTED IN ACCORDANCE WITH ASTM-E814.)

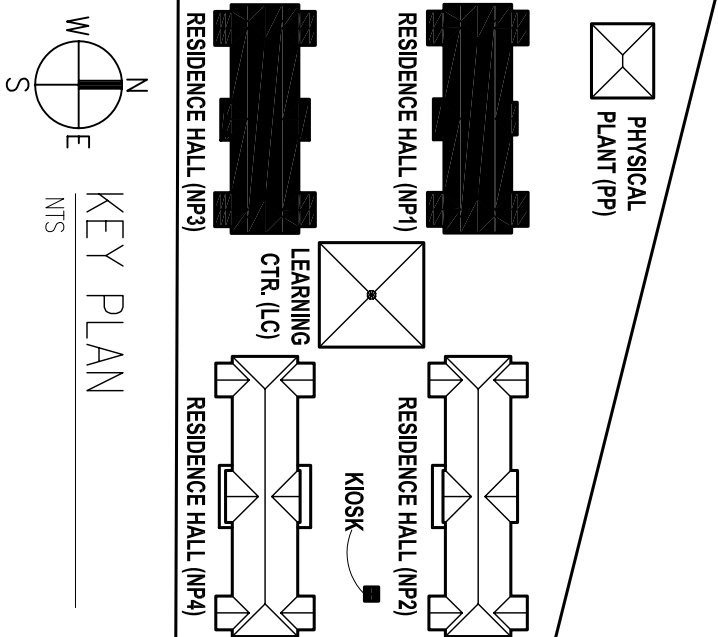
- ACCESS DOOR CABLE NOTE:**
- EACH ACCESS DOOR IS TO BE CONNECTED WITH A CABLE BUNDLE WHICH CONTAINS:
- 1 EA COLEMAN CABLE 75906, SHIELDED 18/6; 1 EA COLEMAN CABLE 75302, 22/2;
 - 1 EA 22/4; 2 EA 18/4. ALL CABLES ARE PLENUM RATED.

GENERAL NOTES:

- CORE DRILL HOLES FOR 2½" CONDUIT IN JANITORIAL CLOSET, 3 EA IN 2nd FLOOR, 2 EA IN 3rd FLOOR AND 1 EACH IN 4th FLOOR (SEE DETAIL ON SEC 0-2).
- INSTALL 1-1/2" SLEEVE ABOVE DOOR IN JANITORIAL CLOSET AND CAULK TO PREVENT THE PASSAGE OF FIRE & SMOKE (TYPICAL 2nd, 3rd & 4th FLOORS). AFTER INSTALLATION OF ALL SECURITY CAMERA AND ACCESS DOOR CABLES SLEEVE IS TO BE FILLED WITH A MATERIAL TO PREVENT THE PASSAGE OF FIRE AND SMOKE.



NOTE: ALL PENETRATIONS OF FIRE PARTITIONS SHALL BE FIRE CAULKED. (PENETRATIONS THROUGH RATED CONSTRUCTION SHALL BE SEALED WITH A MATERIAL CAPABLE OF PREVENTING THE PASSAGE OF FLAMES AND HOT GASES WHEN TESTED IN ACCORDANCE WITH ASTM-E814.) ALL CORRIDOR WALLS ARE SMOKE RATED AND ALL PENETRATIONS IN CORRIDOR WALLS MUST BE SEALED TO PREVENT THE PASSAGE OF SMOKE.



CAUTION: BLDG NP1 IS A REVERSE-MIRROR IMAGE OF BLDG NP3. SEE SHEET SEC 0-1 FOR PROPER CAMERA CONFIGURATION

NP1 & NP3 FIRST FLOOR ACCESS DOOR CABLE LAYOUT
SCALE: $\frac{1}{8}'' = 1'-0''$